

Norwich Western Link

Environmental Statement

Chapter 6: Air Quality

Appendix 6.9: Air Quality Figures

Author: WSP UK Limited

Document Reference: 3.06.09

Version Number: 00

Date: March 2024

Contents

1	Introduction	3
---	--------------------	---

Figures

Figure 1-1	Construction Phase Study Area	4
Figure 1-2	Operational Phase Study Area.....	5
Figure 1-3	Operational Phase Human Receptors	6
Figure 1-4	Operational Phase Ecological Receptors (1 of 22)	7
Figure 1-5	Operational Phase Ecological Receptors (2 of 22)	8
Figure 1-6	Operational Phase Ecological Receptors (3 of 22)	9
Figure 1-7	Operational Phase Ecological Receptors (4 of 22)	10
Figure 1-8	Operational Phase Ecological Receptors (5 of 22)	11
Figure 1-9	Operational Phase Ecological Receptors (6 of 22)	12
Figure 1-10	Operational Phase Ecological Receptors (7 of 22)	13
Figure 1-11	Operational Phase Ecological Receptors (8 of 22)	14
Figure 1-12	Operational Phase Ecological Receptors (9 of 22)	15
Figure 1-13	Operational Phase Ecological Receptors (10 of 22)	16
Figure 1-14	Operational Phase Ecological Receptors (11 of 22)	17
Figure 1-15	Operational Phase Ecological Receptors (12 of 22)	18
Figure 1-16	Operational Phase Ecological Receptors (13 of 22)	19
Figure 1-17	Operational Phase Ecological Receptors (14 of 22)	20
Figure 1-18	Operational Phase Ecological Receptors (15 of 22)	21
Figure 1-19	Operational Phase Ecological Receptors (16 of 22)	22
Figure 1-20	Operational Phase Ecological Receptors (17 of 22)	23
Figure 1-21	Operational Phase Ecological Receptors (18 of 22)	24
Figure 1-22	Operational Phase Ecological Receptors (19 of 22)	25
Figure 1-23	Operational Phase Ecological Receptors (20 of 22)	26
Figure 1-24	Operational Phase Ecological Receptors (21 of 22)	27
Figure 1-25	Operational Phase Ecological Receptors (22 of 22)	28
Figure 1-26	Monitoring Data.....	29

1 Introduction

- 1.1.1 The following figures support Chapter 6: Air Quality. The figures include overview of the Study Area for construction and operational phases, displays human and ecological receptors assessed and identifies local monitoring data used in support of the air quality assessment.

Figure 1-1 Construction Phase Study Area

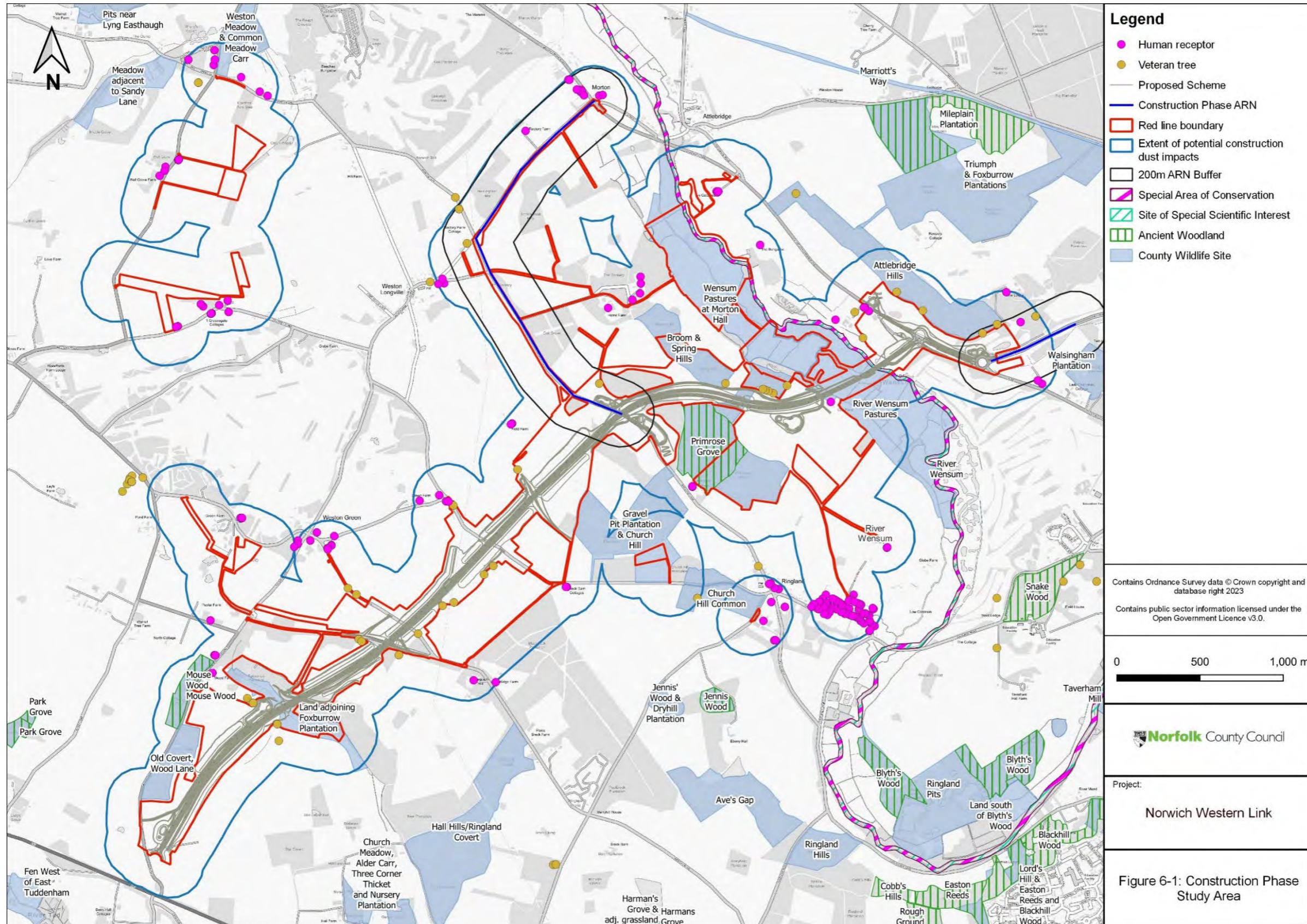


Figure 1-2 Operational Phase Study Area

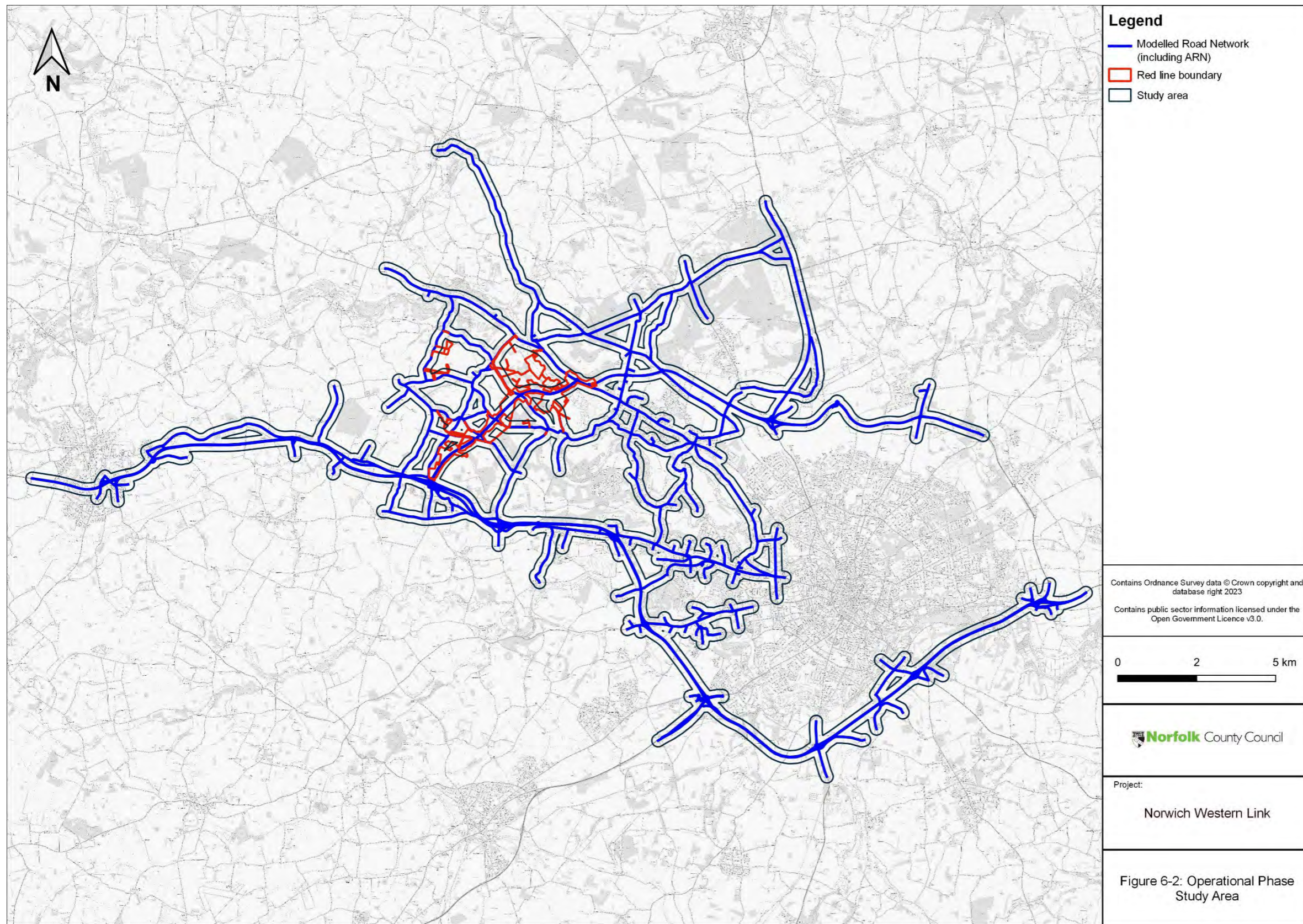


Figure 1-3 Operational Phase Human Receptors

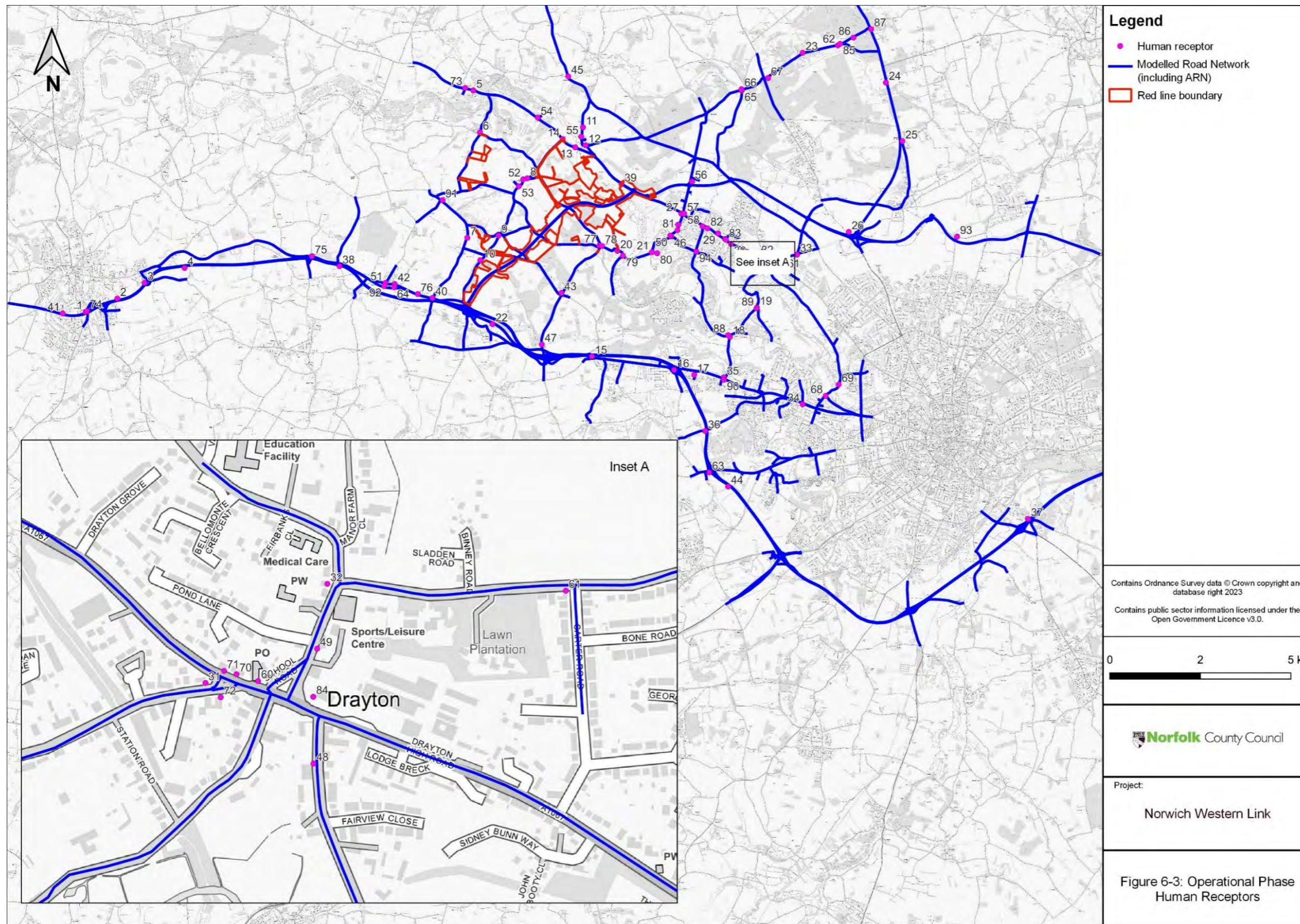


Figure 1-4 Operational Phase Ecological Receptors (1 of 22)

A series of figures (22 in total), each showing parts of the modelled road network and the modelled ecological receptors.

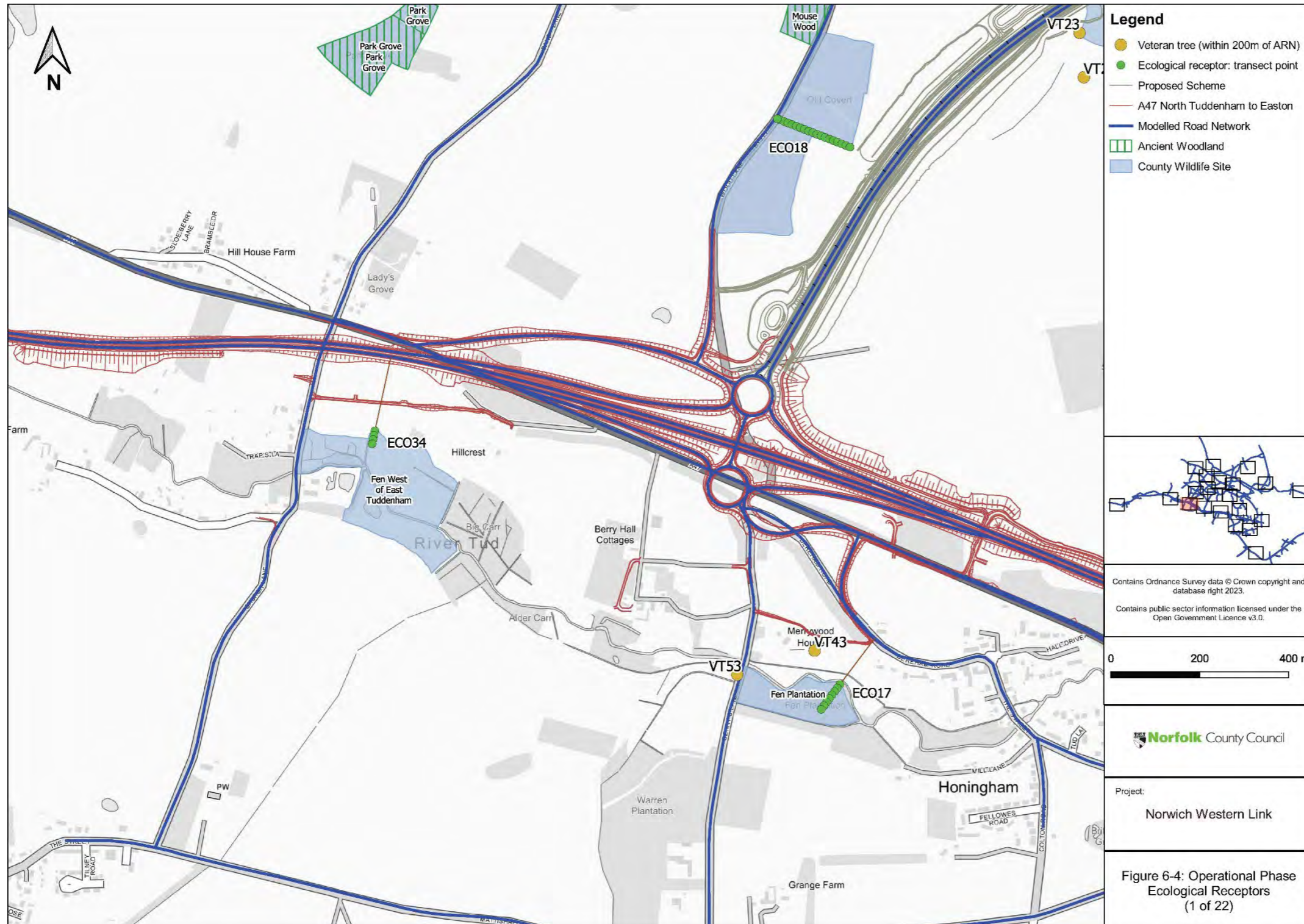


Figure 1-5 Operational Phase Ecological Receptors (2 of 22)

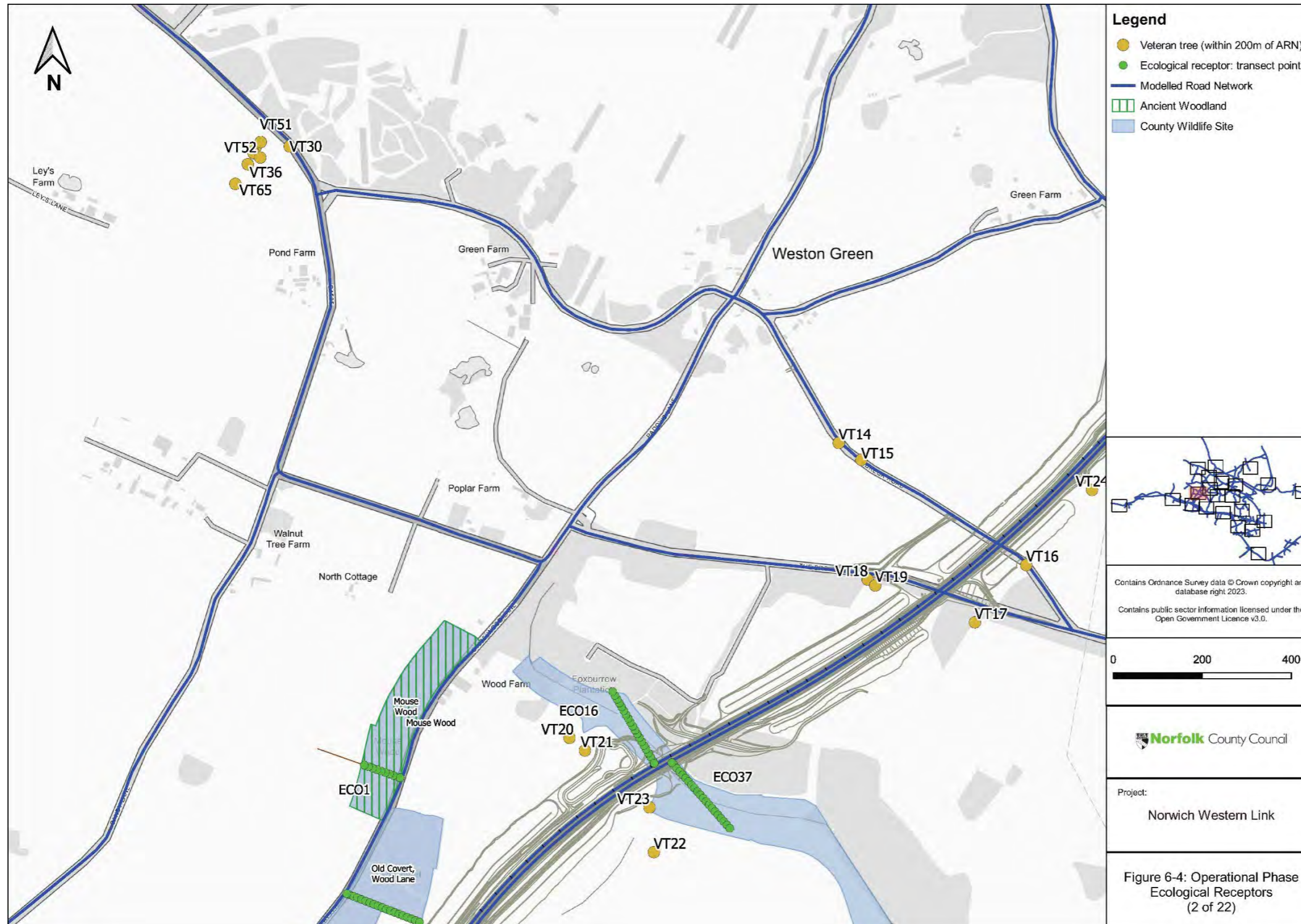


Figure 1-6 Operational Phase Ecological Receptors (3 of 22)

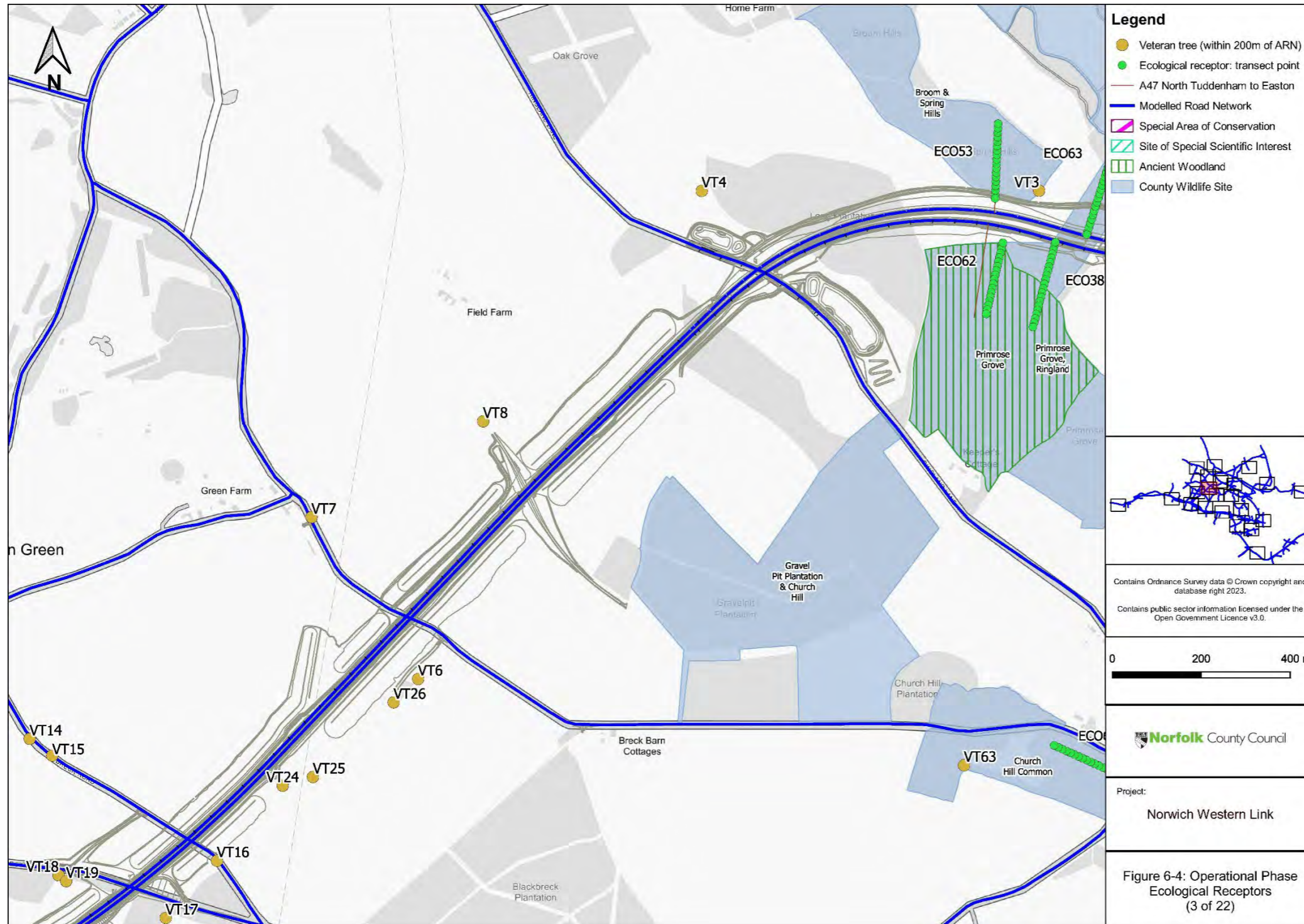


Figure 1-7 Operational Phase Ecological Receptors (4 of 22)

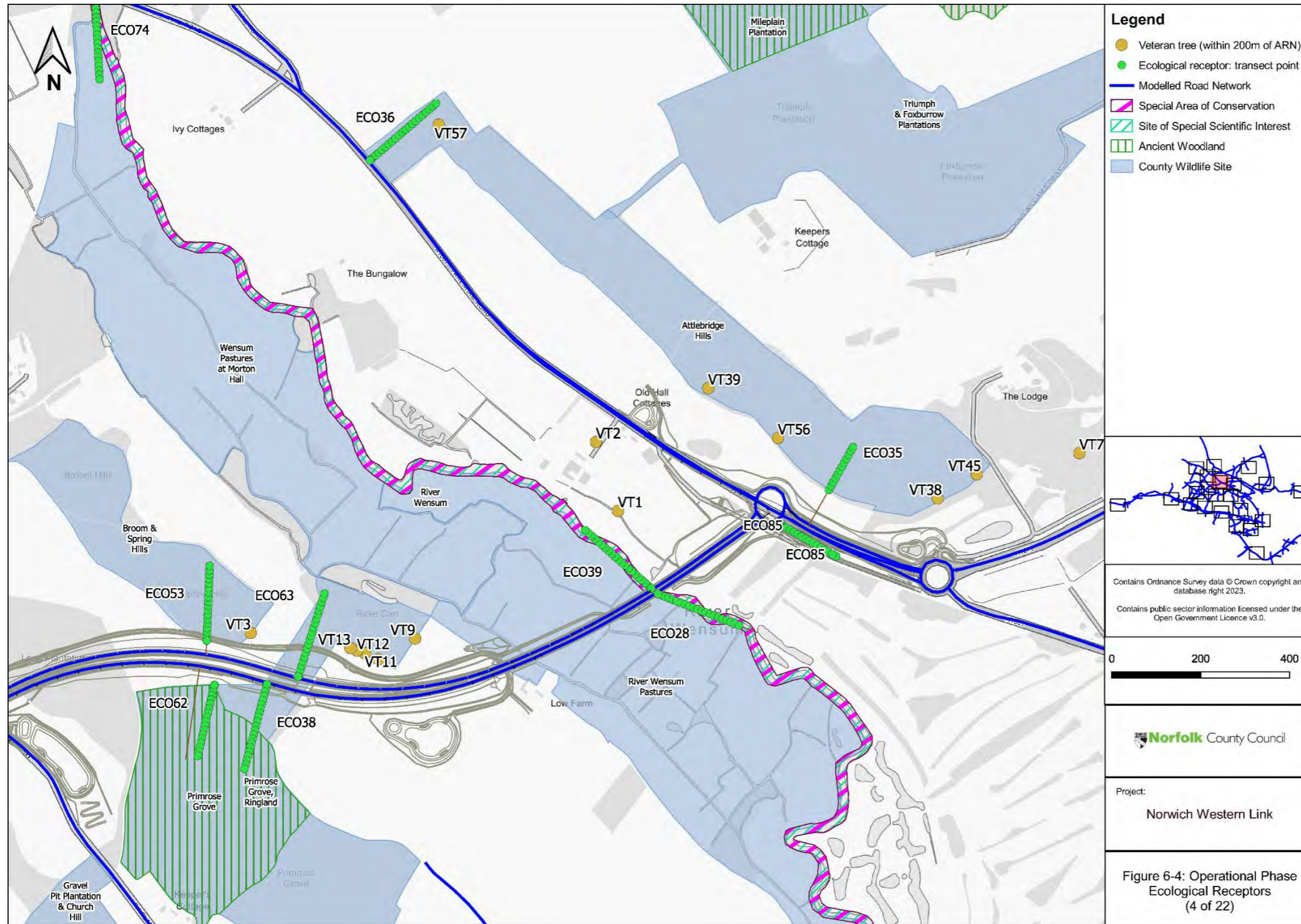


Figure 1-8 Operational Phase Ecological Receptors (5 of 22)

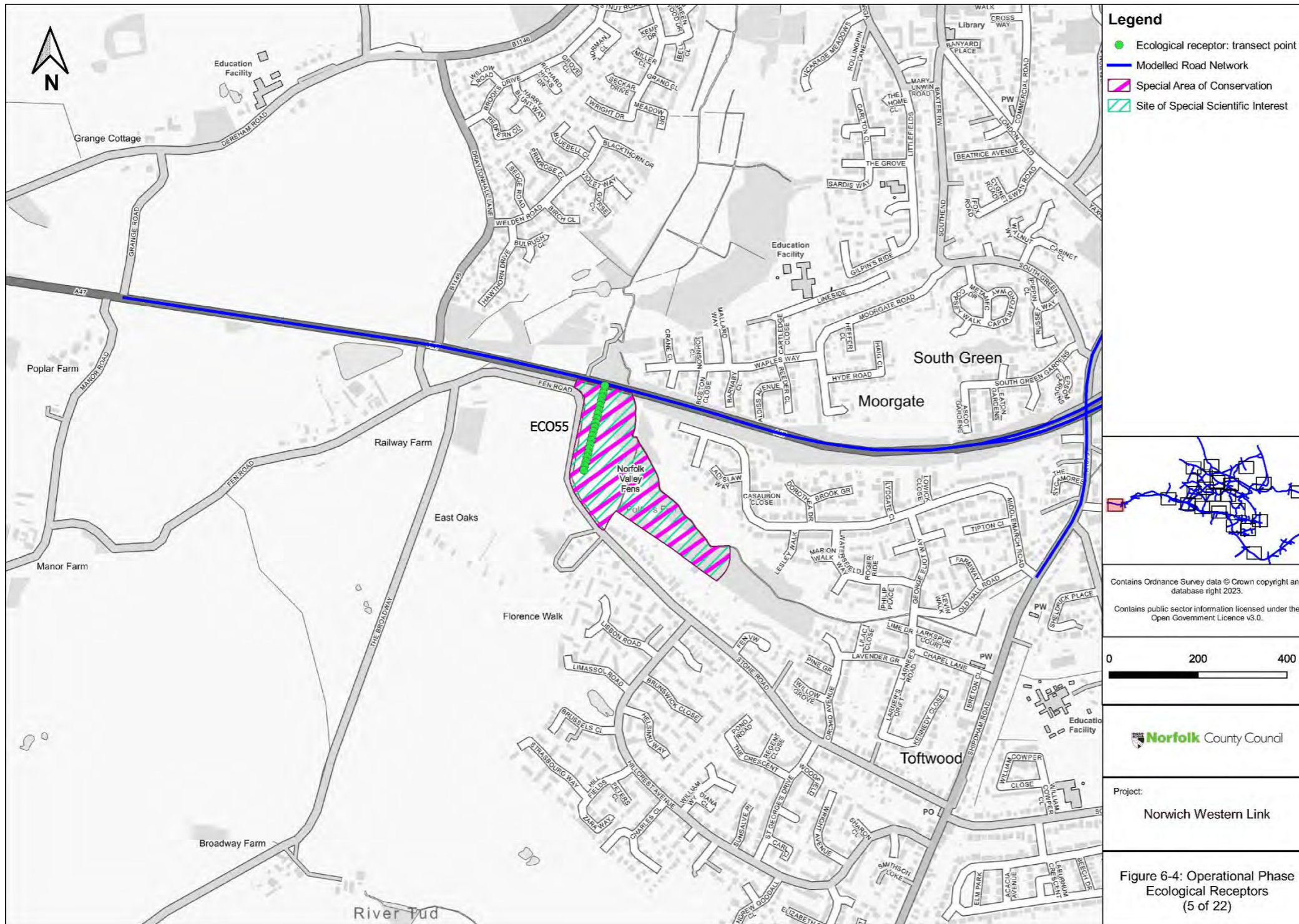


Figure 1-9 Operational Phase Ecological Receptors (6 of 22)



Figure 1-12 Operational Phase Ecological Receptors (9 of 22)

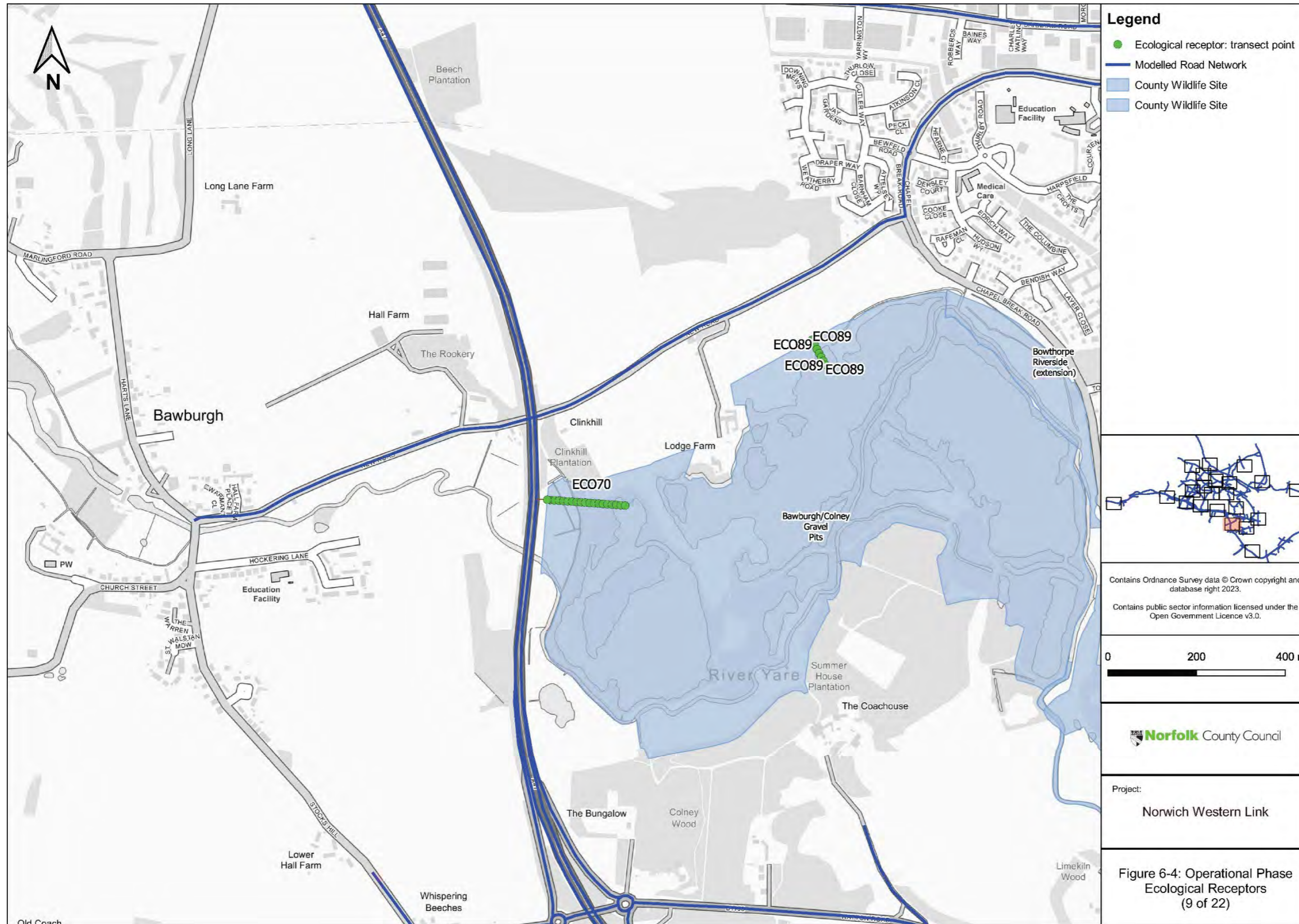


Figure 1-13 Operational Phase Ecological Receptors (10 of 22)

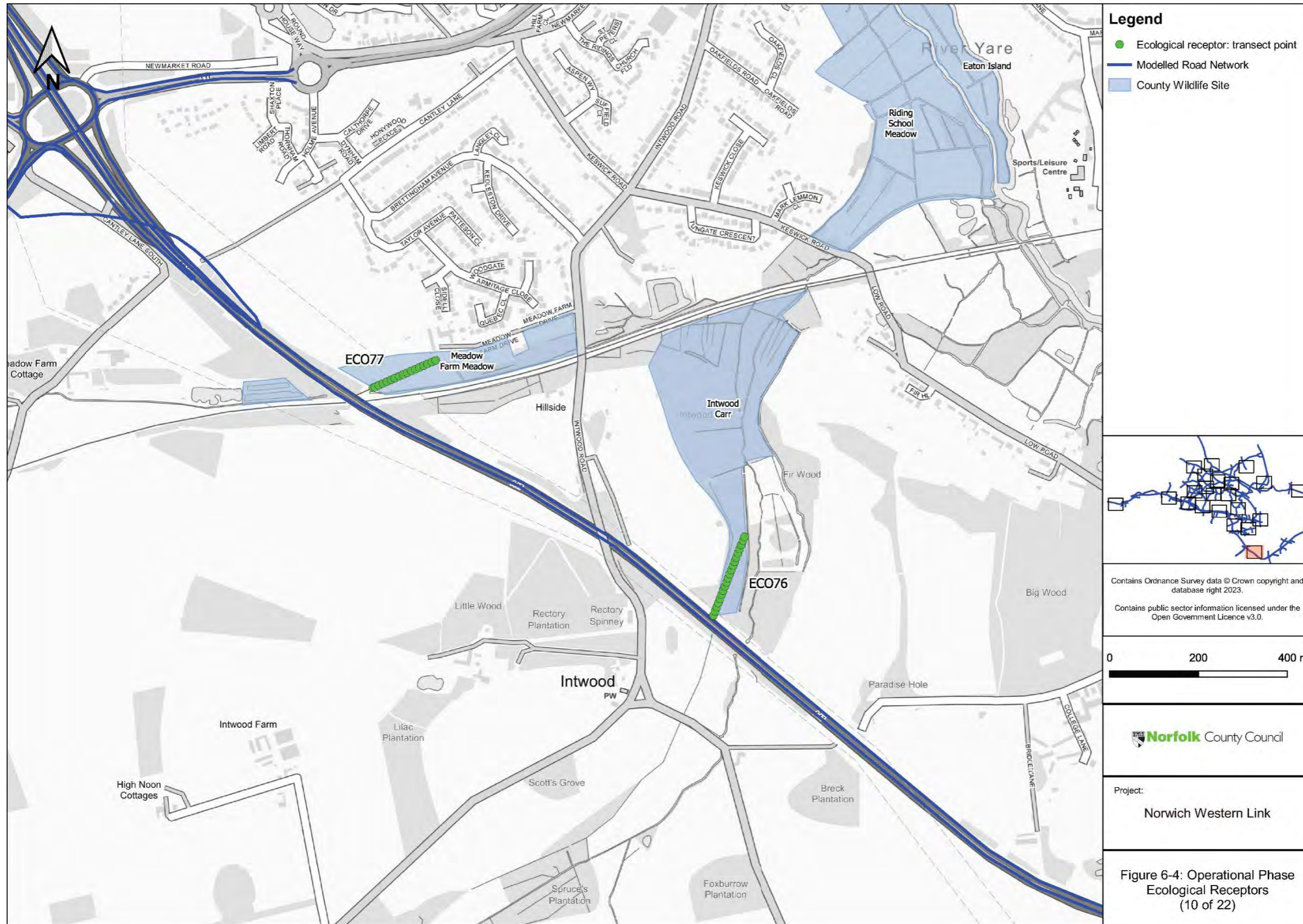


Figure 1-15 Operational Phase Ecological Receptors (12 of 22)

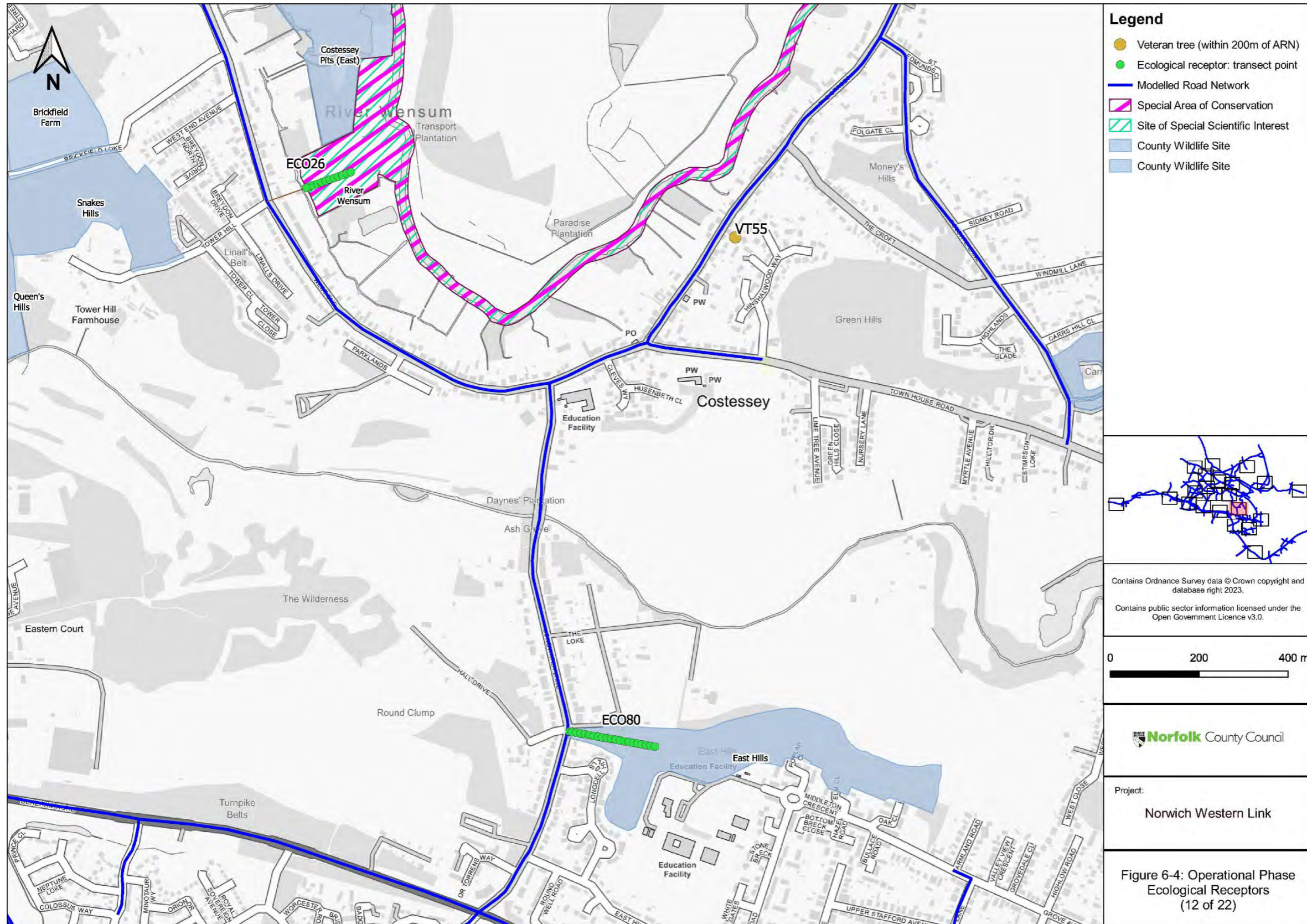


Figure 1-16 Operational Phase Ecological Receptors (13 of 22)

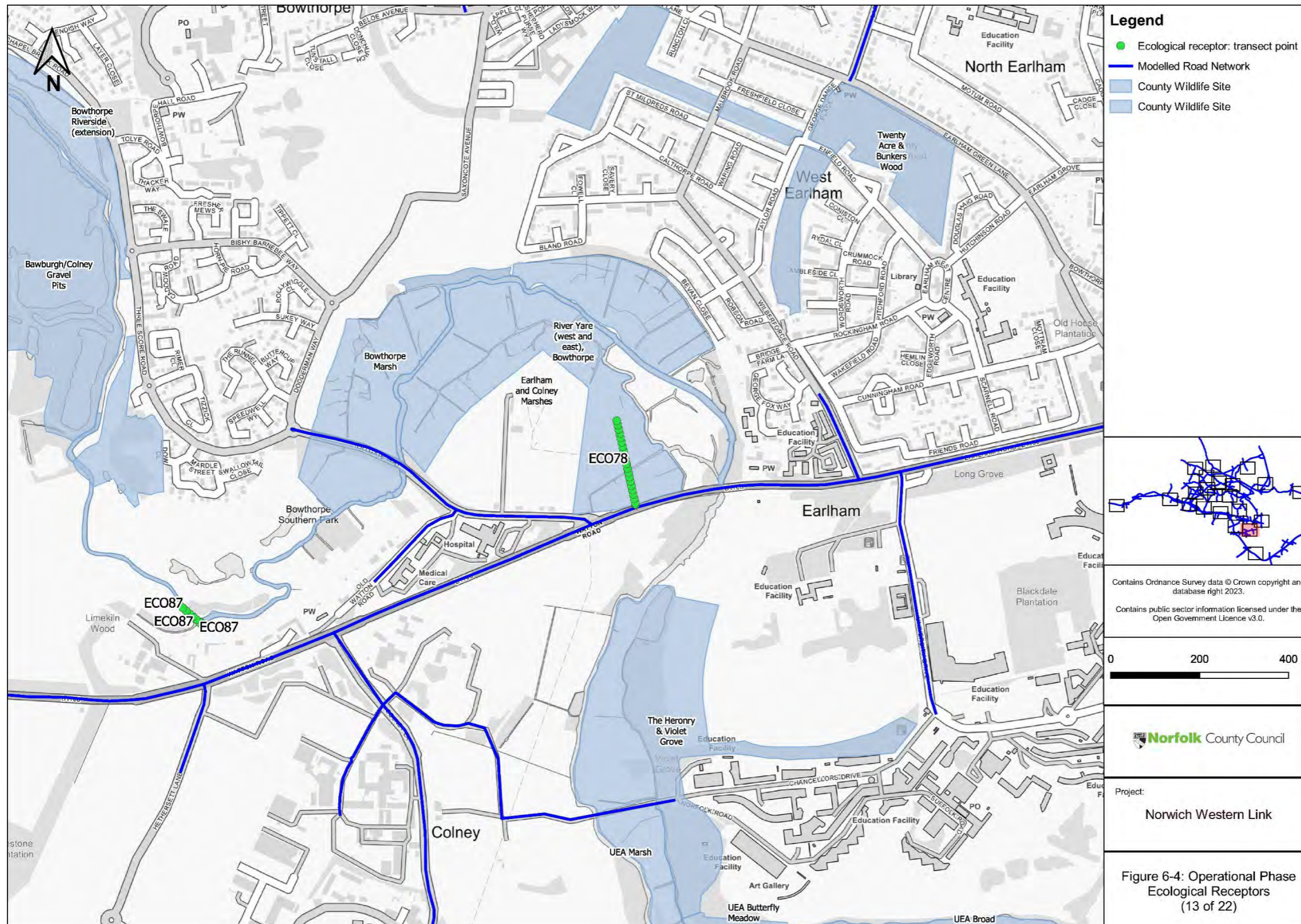


Figure 1-17 Operational Phase Ecological Receptors (14 of 22)

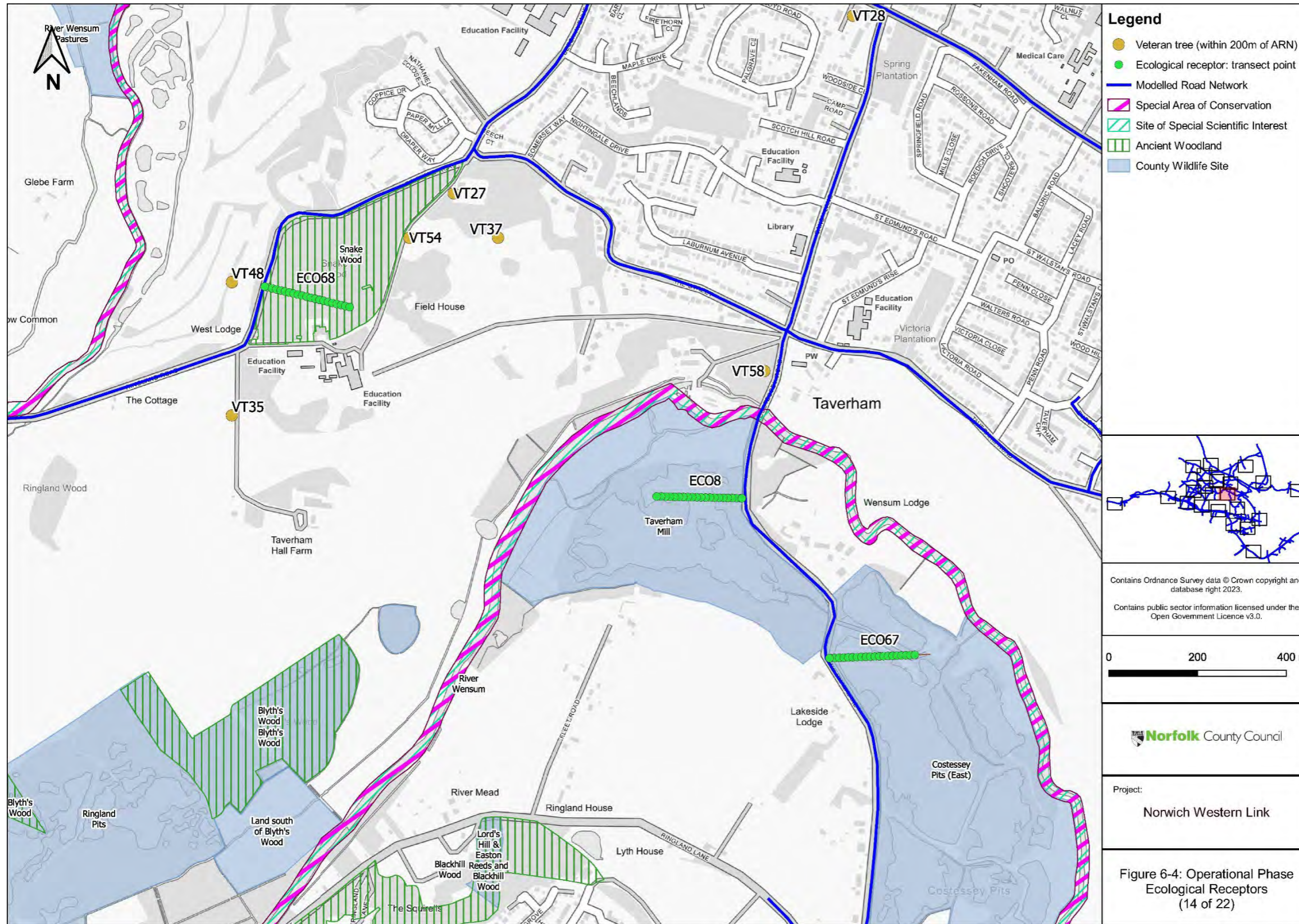


Figure 1-18 Operational Phase Ecological Receptors (15 of 22)

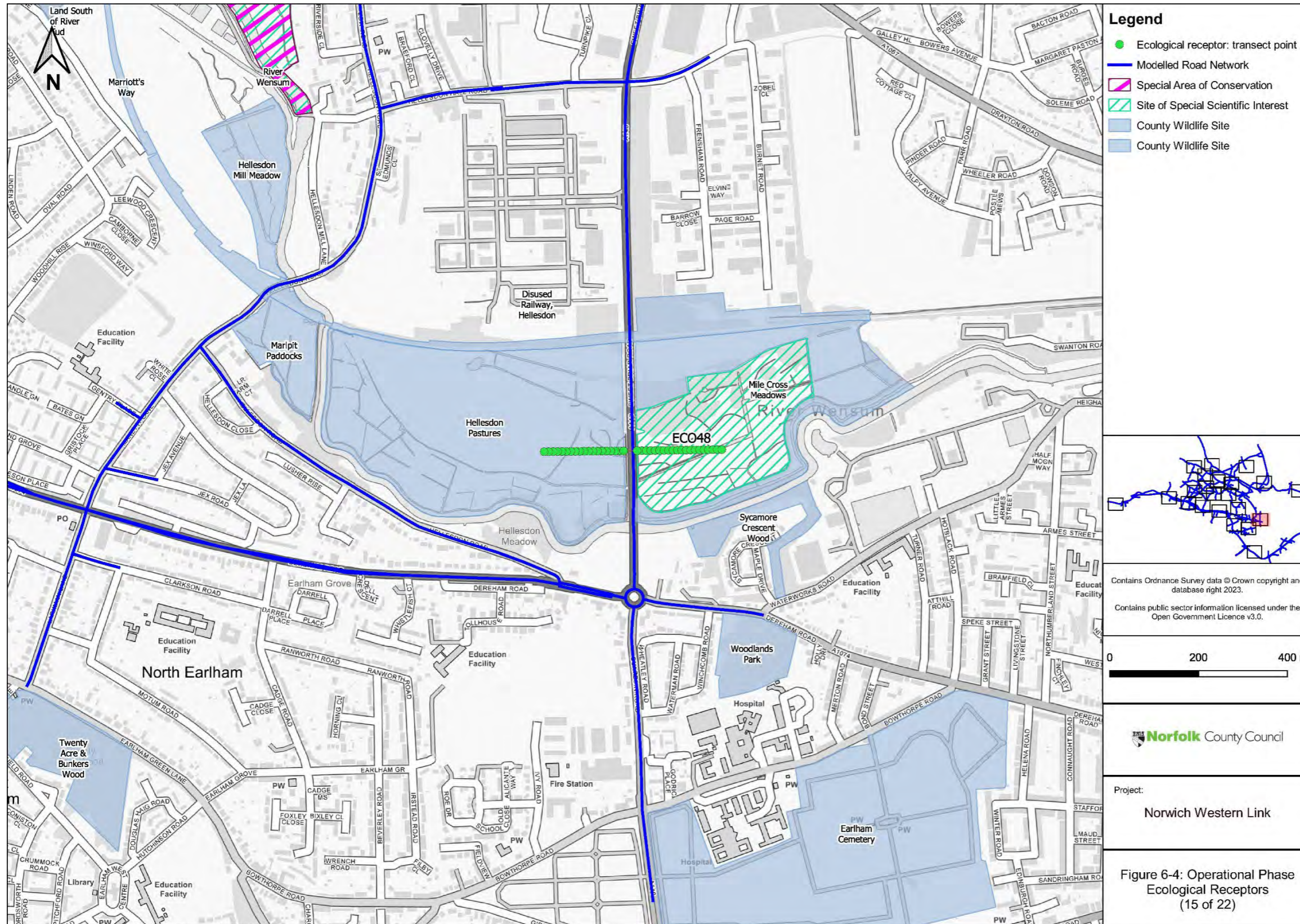


Figure 1-19 Operational Phase Ecological Receptors (16 of 22)

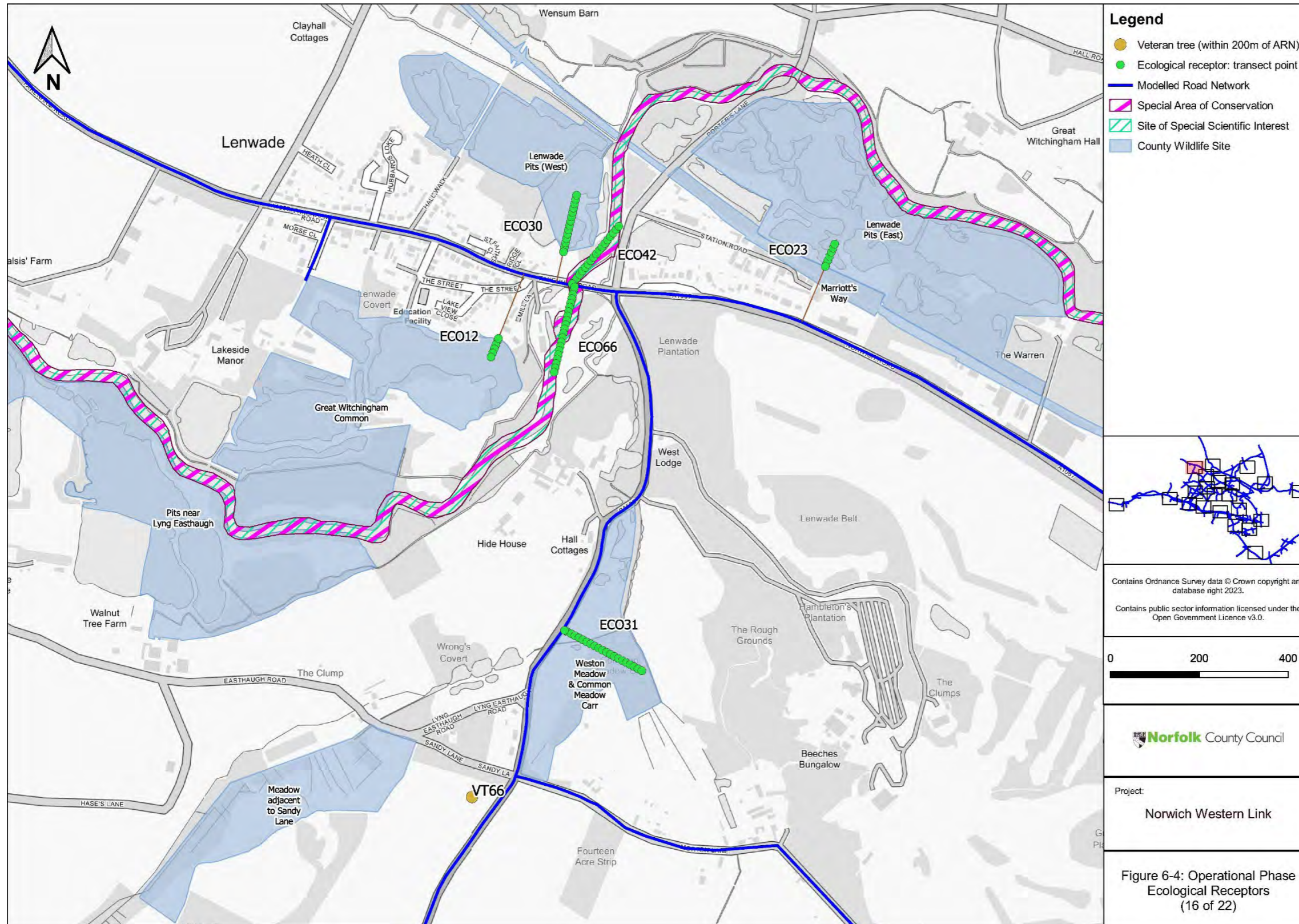


Figure 1-20 Operational Phase Ecological Receptors (17 of 22)

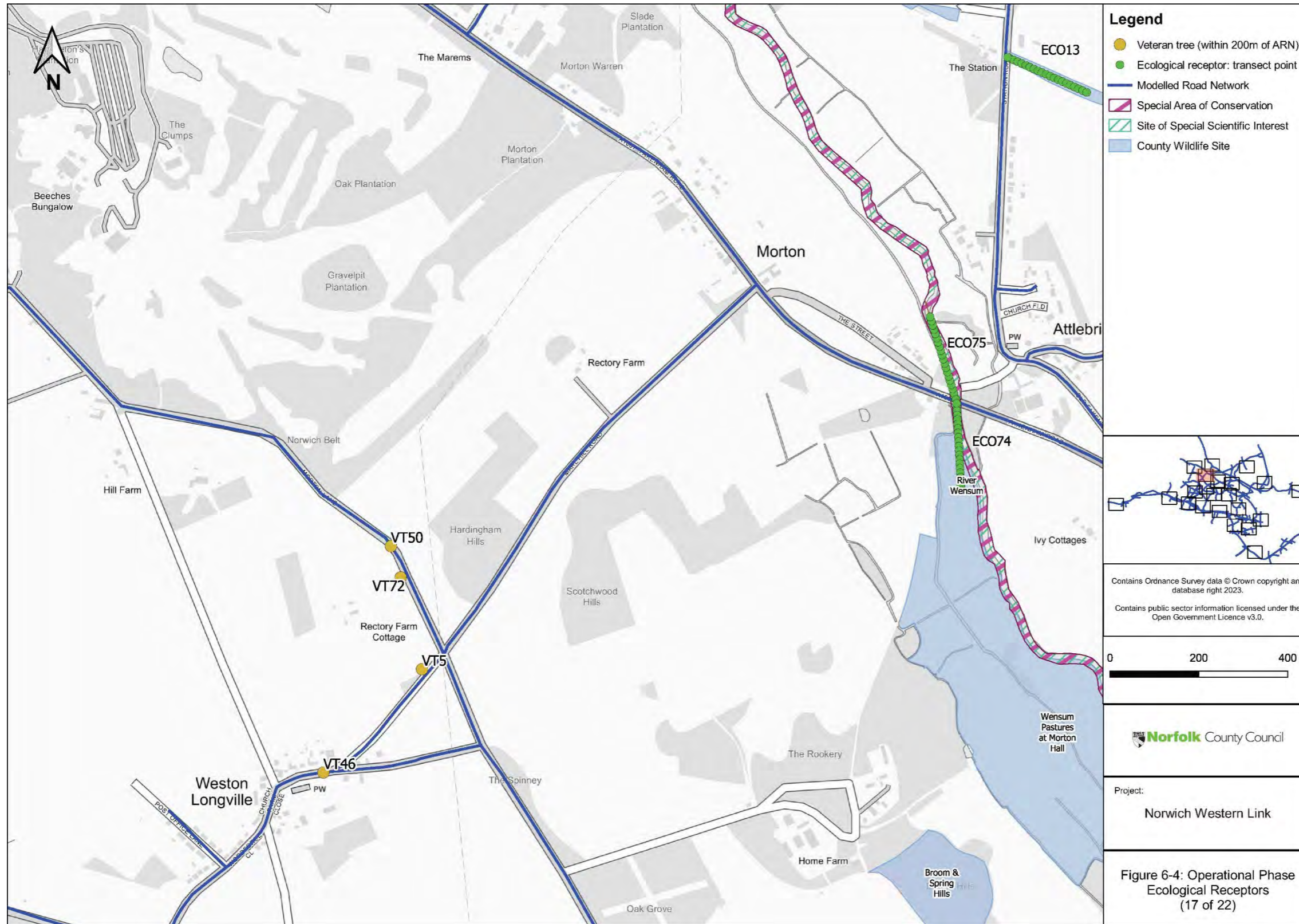


Figure 1-21 Operational Phase Ecological Receptors (18 of 22)

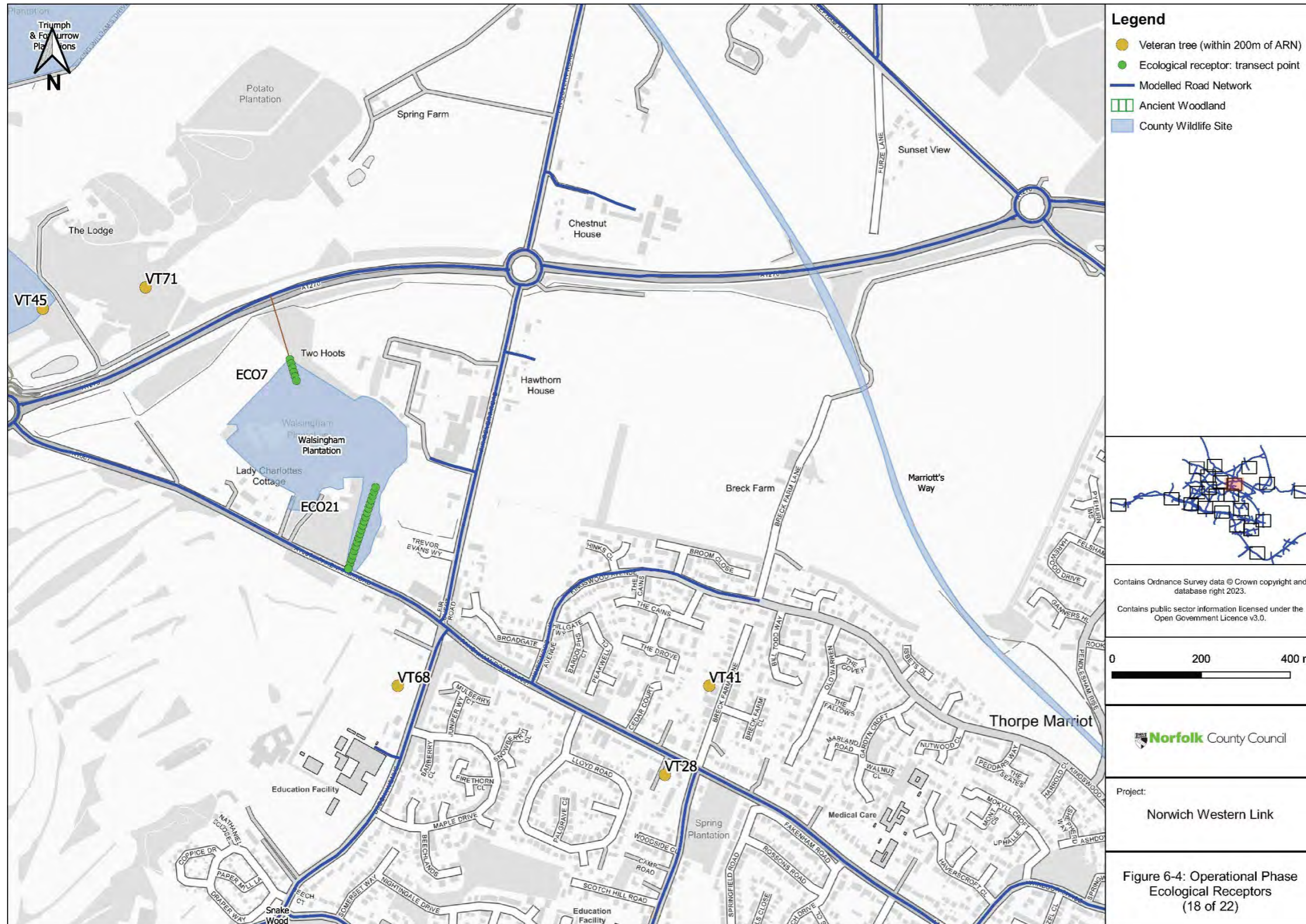


Figure 1-22 Operational Phase Ecological Receptors (19 of 22)

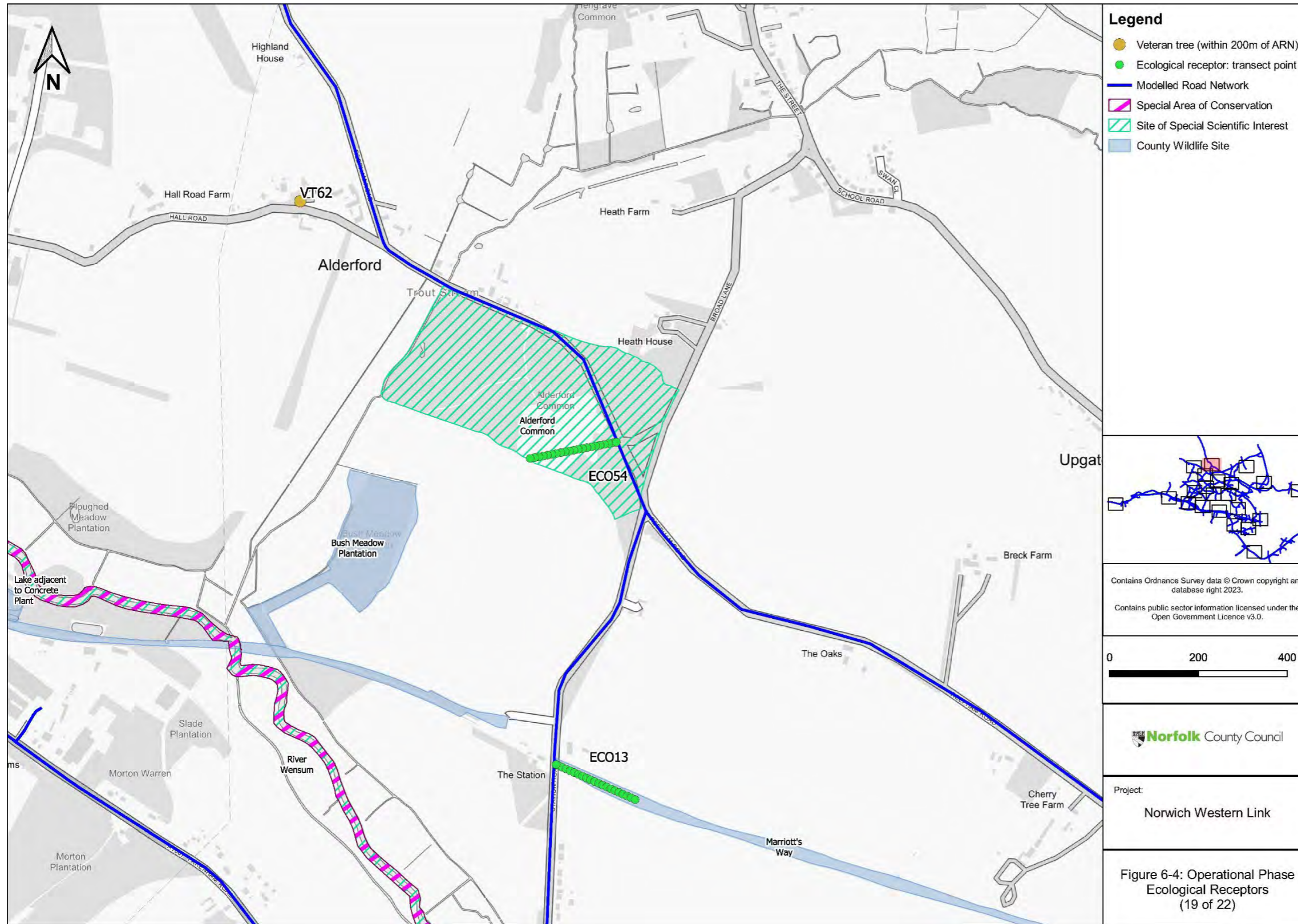


Figure 1-23 Operational Phase Ecological Receptors (20 of 22)

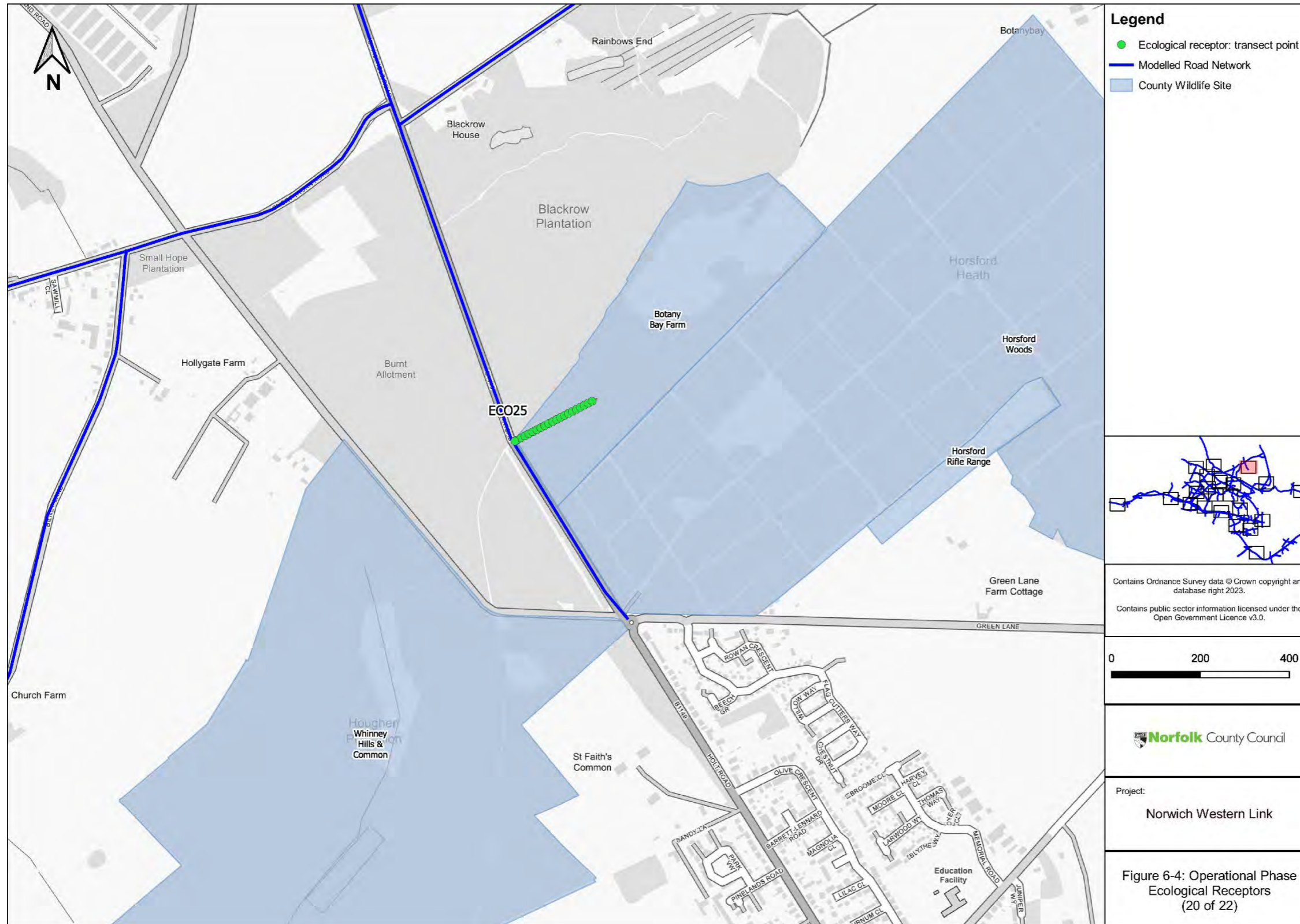


Figure 1-24 Operational Phase Ecological Receptors (21 of 22)

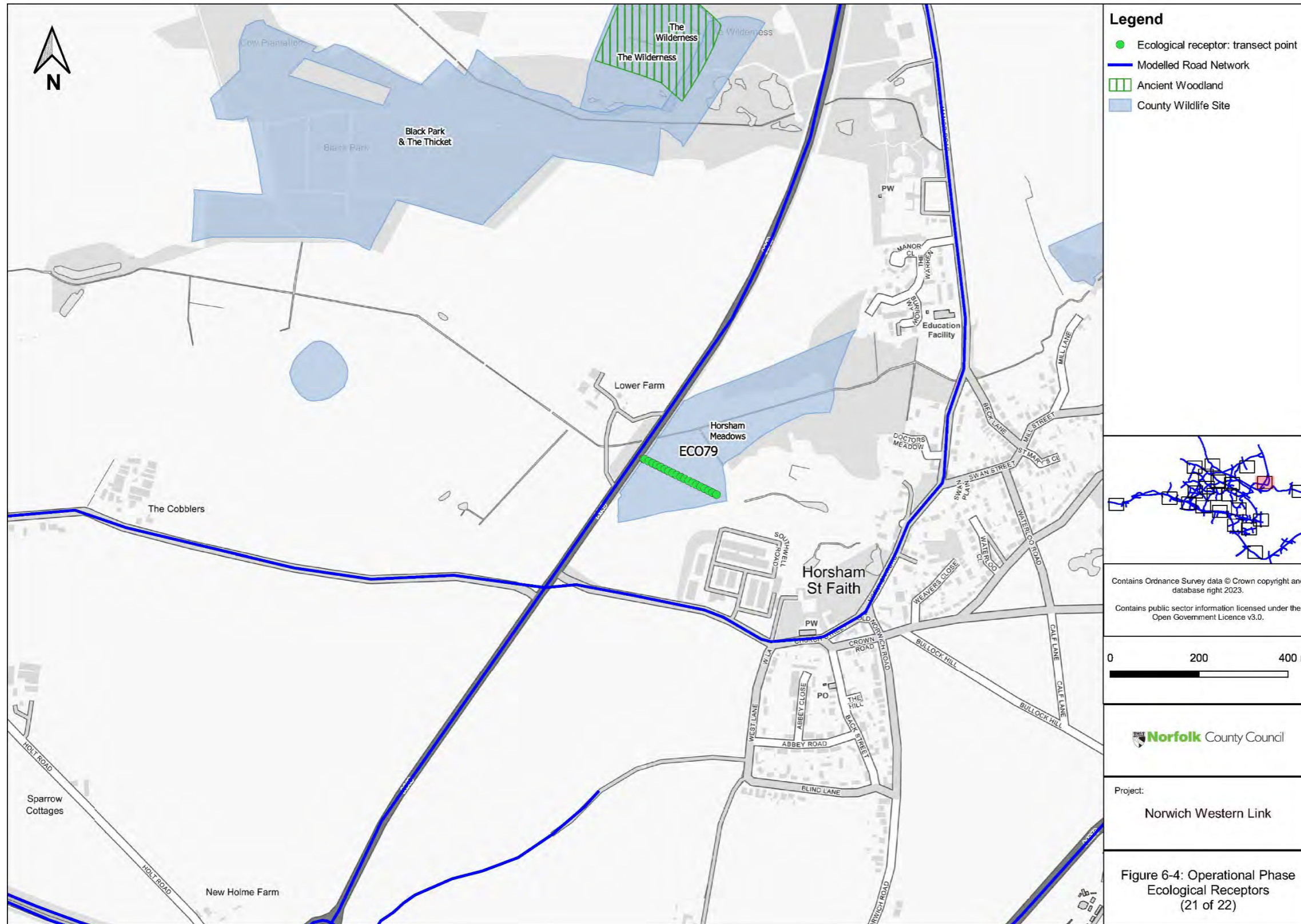


Figure 1-25 Operational Phase Ecological Receptors (22 of 22)

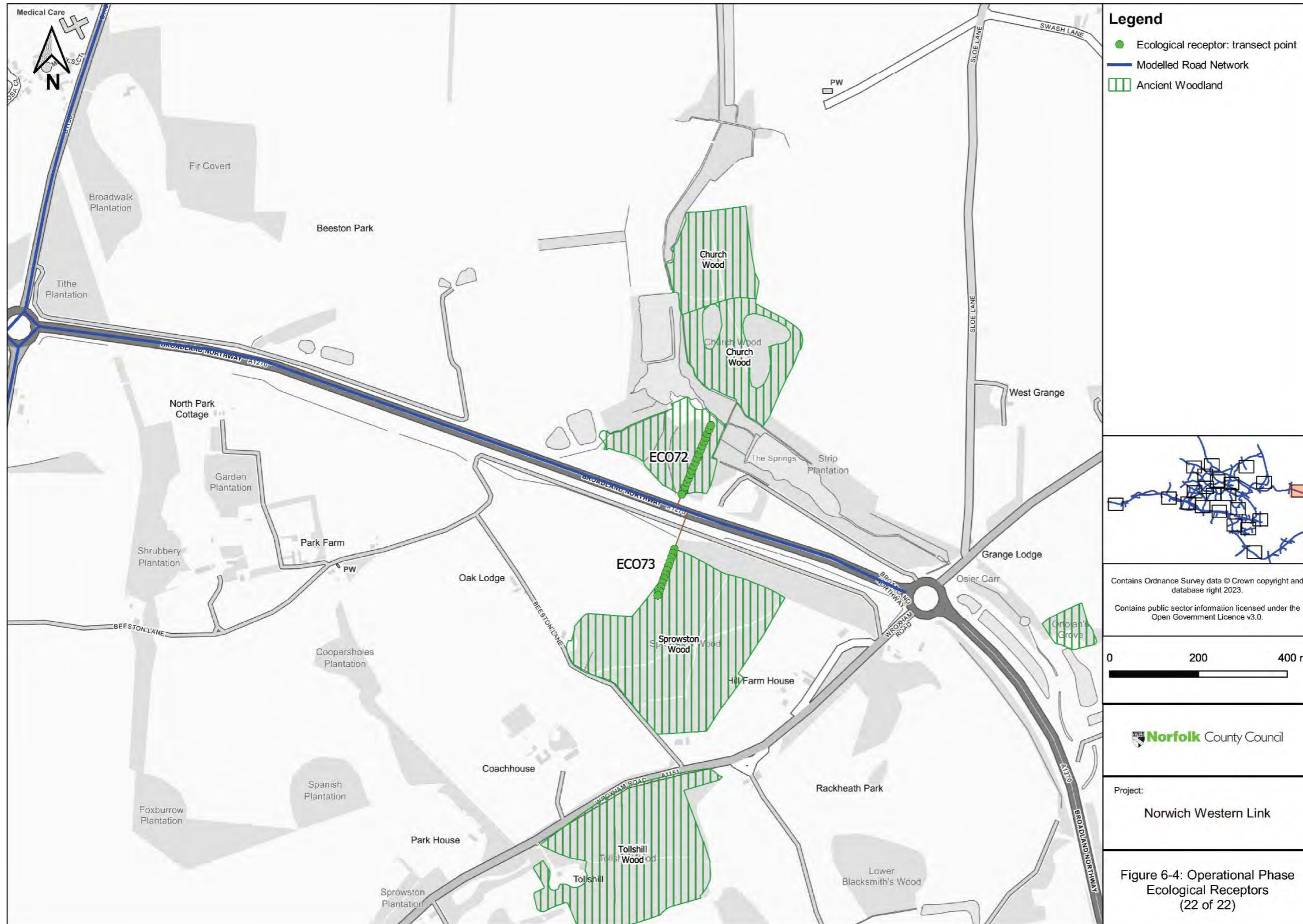


Figure 1-26 Monitoring Data

